

PPS series (1mV/1mA, with RS-232 interface)

Introduction

PPS series are high accuracy programmable DC power supply with single output. MPU control, RS-232/USB interface for PC control, the PPS series facilitates auto test and auto control. The commands of the PPS series are compliant with SCPI commands. Users can easily develop programs to facilitate different applications in auto test and auto control. Users can also store or recall data via the USB host on front panel.

The 4.3-inch TFT LCD display gives full display for parameters and output waveforms. Digital input fulfilled by rotary dial and keypad input makes input fast and accurate. Voltage and current regulations by software, avoids human error and makes the PPS series more accurate.

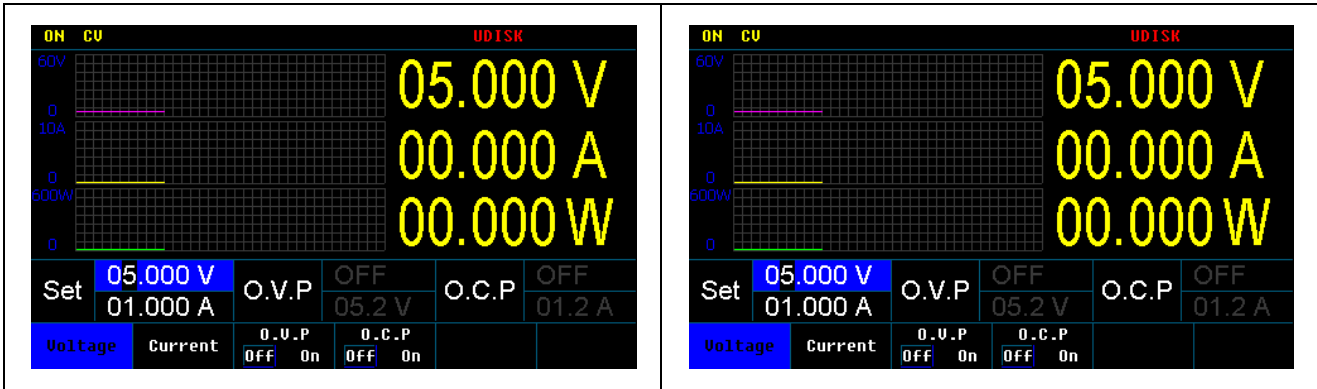
Features

- ✓ High accuracy, high resolution
- ✓ Over load, over voltage, over current, over temperature and reverse polarity protections
- ✓ CV and CC operations, auto CV and CC switch
- ✓ 4.3-inch TFT LCD display
- ✓ High speed rotary dial and keypad input
- ✓ Built-in beeper alarm
- ✓ Panel lock and output ON/OFF function
- ✓ List mode function, 100 sets save & recall for voltage, current and time setups, easy use in auto test
- ✓ Remote sense function
- ✓ Battery charge mode
- ✓ USB device for data storage and recall from PC
- ✓ Standard RS-232 interface, optional USB interface
- ✓ Supports SCPI commands, support Labview
- ✓ 0-5V analog control

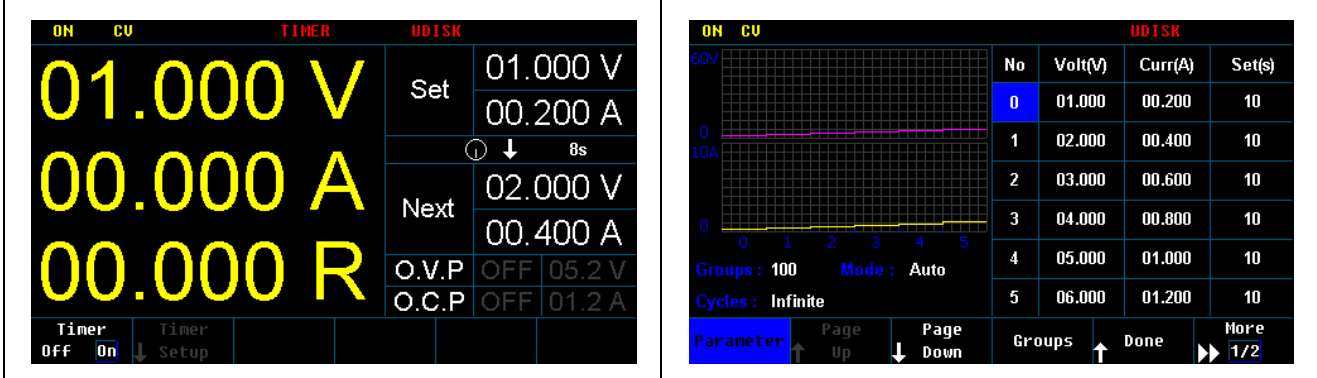
Product photo

PPS-6010

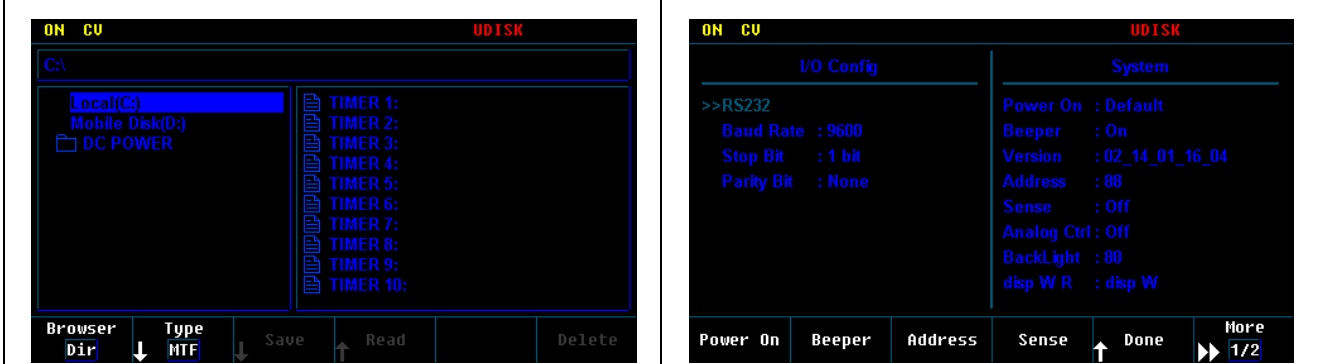




4.3-inch TFT LCD screen for full parameters and waveform display.

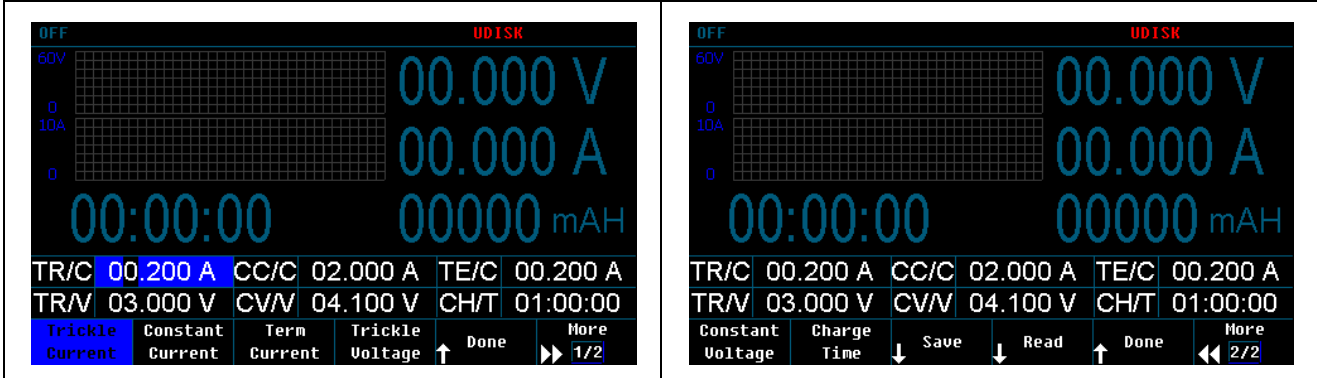


Set TIMER on to set running time, number of groups & cycle, and running mode.



Save & Recall settings

System settings



Settings for battery charge

Programmable Switching DC Power Supply

Specifications (600W)

Model	PPS-2030	PPS-3010	PPS-3020	PPS-6010	PPS-8008
Rated output (0°C~40°C)					
Voltage	0~20V	0~30V	0~30V	0~60V	0~80V
Current	0~30A	0~10A	0~20A	0~10A	0~7.5A
OVP	0.1~24V	0.1~34V	0.1~34V	0.1~64V	0.1~88V
OCP	0.1~34A	0.1~12A	0.1~24A	0.1~12A	0.1~8.8A
Constant Voltage Operation					
Line regulation	≤0.01%+4mV				
Load regulation	≤0.1%+5mV				
Ripple & Noise	2mVrms, 30mVpp (20Hz~20MHz)				
Recovery time	≤1.5ms (50% load change)				
Temp.Co-efficiency	≤300ppm/°C				
Setting accuracy	±(0.03% of reading + 10mV) (25±5°C)				
Setting resolution	1mV				
Constant Current Operation					
Line regulation	≤0.2%+3mA				
Load regulation	≤0.2%+5mA				
Ripple & Noise	≤10mArms				
Setting accuracy	±(0.3% of reading + 10mA) (25±5°C)				
Setting resolution	1mA				
Display					
Voltmeter	5 digits LCD display				
Ammeter	5 digits LCD display				
Reading resolution	1mV/1mA				
Reading accuracy	Voltage	±(0.02% of reading +5mV) (25±5°C)			
	Current	±(0.05% of reading +10mA) (25±5°C)			
Protection	Over load, over voltage, over current, over temperature and reverse polarity protections				
Programming interface	RS-232 interface, optional USB interface, support SCPI commands				
Memory	100 sets				
Insulation	Between terminals and chassis/other terminals: ≤60VDC				
Operation environment	Indoor use	Altitude: ≤2000m	Ambient temperature: 0~40°C		
	Relative humidity: ≤80%	Safety: grade II	Pollution degree: 2		
Storage environment	Ambient temperature: -10~70°C		Relative humidity: ≤70%		
Power source	AC220V±10%, 50/60Hz, or at request				
Accessories	Power cord x1, Operation manual x1, RS-232 cable x1, Software CD x1				
Dimension	215x89x352mm				
Weight	4.5kg				

Programmable Switching DC Power Supply

Specifications (900W)

Model	PPS-1560	PPS-2045	PPS-3030	PPS-6015	PPS-8011
Rated output (0°C~40°C)					
Voltage	0~15V	0~20V	0~30V	0~60V	0~80V
Current	0~60A	0~45A	0~30A	0~15A	0~11A
OVP	0.1~18V	0.1~23V	0.1~34V	0.1~64V	0.1~88V
OCP	0.1~62A	0.1~50A	0.1~34A	0.1~17A	0.1~12A
Constant Voltage Operation					
Line regulation	≤0.01%+4mV				
Load regulation	≤0.1%+5mV				
Ripple & Noise	2mVrms, 30mVpp(20Hz~20MHz)				
Recovery time	≤1.5ms (50% load change)				
Temp.Co-efficiency	≤300ppm/°C				
Setting accuracy	±(0.03% of reading + 10mV) (25±5°C)				
Setting resolution	1mV				
Constant Current Operation					
Line regulation	≤0.2%+3mA				
Load regulation	≤0.2%+5mA				
Ripple & Noise	≤10mArms				
Setting accuracy	±(0.3% of reading + 10mA) (25±5°C)				
Setting resolution	1mA				
Display					
Voltmeter	5 digits LCD display				
Ammeter	5 digits LCD display				
Reading resolution	1mV/1mA				
Reading accuracy	Voltage	±(0.02% of reading +5mV) (25±5°C)			
	Current	±(0.05% of reading +10mA) (25±5°C)			
Protection	Over load, over voltage, over current, over temperature and reverse polarity protections				
Programming interface	RS-232 interface, optional USB interface, support SCPI commands				
Memory	100 sets				
Insulation	Between terminals and chassis/other terminals: ≤60VDC				
Operation environment	Indoor use	Altitude: ≤2000m	Ambient temperature: 0~40°C		
	Relative humidity: ≤80%	Safety: grade II	Pollution degree: 2		
Storage environment	Ambient temperature: -10~70°C		Relative humidity: ≤70%		
Power source	AC220V±10%, 50/60Hz				
Accessories	Power cord x1, Operation manual x1, RS-232 cable x1, Software CD x1				
Dimension	215x89x412mm				
Weight	5.5kg				